



# **eForms Express® 3.0**

## **Demonstration Installation Guide**



## Contents

Downloading .....	3
Length of Demonstration .....	4
Support .....	4
Operating System Requirements .....	4
Windows® XP and Windows® 2003 Server .....	4
Windows® Vista and Windows® 2008 Server .....	4
Database Requirements .....	5
SQL Server 2005 32-bit System Requirements .....	5
SQL Server 2005 64-bit System Requirements .....	6
SQL Server 2008 System Requirements .....	7
Server Installation .....	8
Windows Installer 3.1 .....	9
Microsoft® .Net 2.0 Framework .....	12
eForms Express® 3.0 Server Installation .....	15
Creating and Connecting to a Database Instance .....	20



## Downloading

eForms Express® 3.0 can be downloaded from [www.eformsexpress.com](http://www.eformsexpress.com). Select the download button, the following window will appear:

A screenshot of a web browser window titled "http://www.eformsexpress.com/dlform.php - W...". The page content is on a dark blue background. It contains a form with the following fields: "Name:", "Email:", "Phone:", and "Zip:", each followed by a text input box. Below these fields is a "Submit" button. At the bottom of the form, there is a checkbox and the text "I have read and understand the End-User License Agreement". The browser window also shows standard window controls (minimize, maximize, close) and a scrollbar on the right side.

A valid email address, name and phone number are required to receive demo support. After accepting the EULA agreement select the submit button. An email will be sent to the email address that was submitted that will contain a download link:

Thank you for choosing eForms Express. Here is your download link:  
<http://eformsexpress.com/download.php?token=43930984bd1f639021d8fb0bbae54924>

You can click on the link inside your mail client or copy and paste the link in your Internet browser address bar.



## Length of Demonstration

The downloaded trial version is fully functioning software. You will be able to create unlimited indexes, departments and forms. You will have 500 prints or 20 days to demonstrate eForms Express® 3.0.

If longer time for demonstration is required please contact us at [sales@bbds.biz](mailto:sales@bbds.biz).

## Support

We fully support our demonstration software. Please contact us by email: [efxhelp@bbds.biz](mailto:efxhelp@bbds.biz) or call us at 770-277-2064 (9:00 A.M. to 5:00 P.M. eastern).

## Operating System Requirements

### Windows® XP and Windows® 2003 Server

eForms Express® 3.0 download package requires the following system software:

Windows® XP, Windows® 2003 Server Service Pack 2 (Must be Installed Separately)

Windows® Installer 3.1

Windows® .Net 2.0 Framework

With the exception of Windows® XP, Windows® 2003 Server Service Pack 2, all required software is bundled with the eForms Express® 3.0 installer and will automatically install.

### Windows® Vista and Windows® 2008 Server

Windows® Vista and Windows® Server 2008 contain the following required packages:

Windows® Installer 3.1

Windows® .Net 2.0 Framework

You will not be prompted during installation



## Database Requirements

eForms Express<sup>®</sup> 3.0 installer already comes bundled with Microsoft<sup>®</sup> SQL Server<sup>®</sup> 2005 Express SP2 edition. eForms Express<sup>®</sup> 3.0 demonstration package has been tested using minimum hardware requirements. We recommend using “Recommended Requirement” in a production environment.

### SQL Server 2005 32-bit System Requirements

This table shows hardware requirements for installing and running SQL Server 2005 on the 32-bit platform.

SQL Server 2005 (32-bit)	Processor type <sup>1</sup>	Processor speed <sup>2</sup>	Memory (RAM) <sup>3</sup>
SQL Server 2005 Enterprise Edition <sup>4</sup> SQL Server 2005 Developer Edition SQL Server 2005 Standard Edition	Pentium III-compatible processor or higher	Minimum: 600 MHz Recommended: 1 GHz or higher	Minimum: 512 MB Recommended: 1 GB or more Maximum: Operating system maximum
SQL Server 2005 Workgroup Edition	Pentium III-compatible processor or higher	Minimum: 600 MHz Recommended: 1 GHz or higher	Minimum: 512 MB Recommended: 1 GB or more Maximum: Operating system maximum
SQL Server 2005 Express Edition	Pentium III-compatible processor or higher	Minimum: 500 MHz Recommended: 1 GHz or higher Minimum: 192 MB	Recommended: 512 MB or more Maximum: Operating system maximum
SQL Server 2005 Express Edition with Advanced Services	Pentium III-compatible processor or higher	Minimum: 600 MHz Recommended: 1 GHz or higher	Minimum: 512 MB Recommended: 1 GB or more Maximum: Operating system maximum

<sup>1</sup> System Configuration Checker (SCC) will block Setup if the requirement for processor type is not met.

<sup>2</sup> SCC will warn the user but will not block Setup if the minimum or recommended processor speed check is not met. No warning will appear on multiprocessor machines.

<sup>3</sup> SCC will warn the user but will not block Setup if the minimum or recommended RAM check is not met. Memory requirements are for this release only, and do not reflect additional memory requirements of the operating system. SCC verifies the memory available when Setup starts.

<sup>4</sup> SQL Server Evaluation Edition supports the same feature set as SQL Server 2005 Enterprise Edition.



## SQL Server 2005 64-bit System Requirements

This table shows hardware requirements for installing and running SQL Server 2005 on the 64-bit platform.

SQL Server 2005 (64-bit)	Processor type <sup>1</sup>	Processor speed <sup>2</sup>	Memory (RAM) <sup>3</sup>
SQL Server 2005 Enterprise Edition <sup>4</sup>	IA64 minimum: Itanium processor or higher x64 minimum: AMD Opteron, AMD Athlon 64, Intel Xeon with Intel EM64T support, Intel Pentium IV with EM64T support	IA64 minimum: 1 GHz	IA64 minimum: 512 MB
SQL Server 2005 Developer Edition		IA64 recommended: 1 GHz or more	IA64 recommended: 1 GB or more
SQL Server 2005 Standard Edition		x64 minimum: 1 GHz	IA64 maximum: 32 TB
		x64 recommended: 1 GHz or more	Operating system maximum
			Minimum: 512 MB
			x64 recommended: 1 GB or more
			x64 maximum: Operating system maximum

<sup>1</sup> System Configuration Checker (SCC) will block Setup if the processor type requirement is not met.

<sup>2</sup> SCC will warn the user but will not block Setup if the minimum or recommended processor speed check is not met.

<sup>3</sup> SCC will warn the user but will not block Setup if the minimum or recommended RAM check is not met. Memory requirements are for this release only, and do not reflect additional memory requirements of the operating system. SCC verifies the memory available when Setup starts.

<sup>4</sup> SQL Server 2005 Evaluation Edition supports the same feature set as SQL Server 2005 Enterprise Edition.



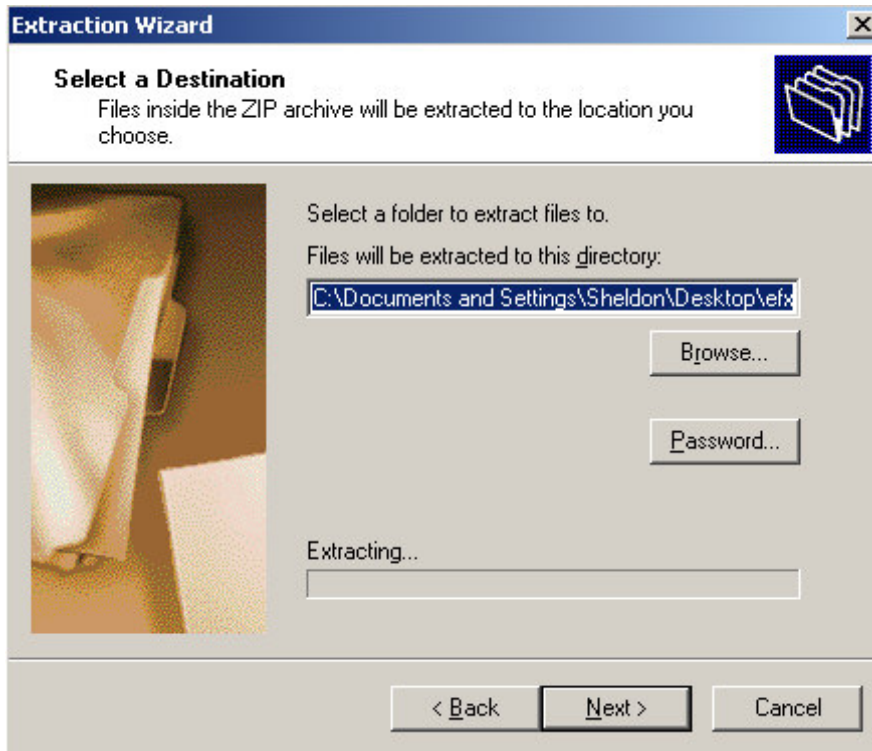
## SQL Server 2008 System Requirements

Currently Testing, SQL Server 2008 and 2008 Express additions.



## Server Installation

After downloading “efx.zip”, extract to a known location:



**Note: You can use any extracting software as long as it handles WinZip files.**

After extracting a file folder will appear in the directory you selected.

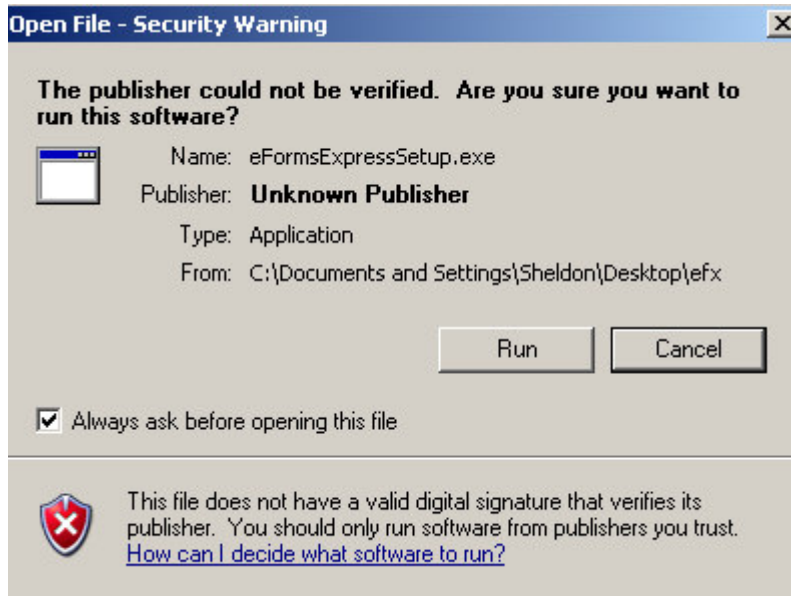


Open the “efx” folder and run “eFormsExpressSetup.exe” file.

Name	Size
eFormsExpressSetup	94,044 KB

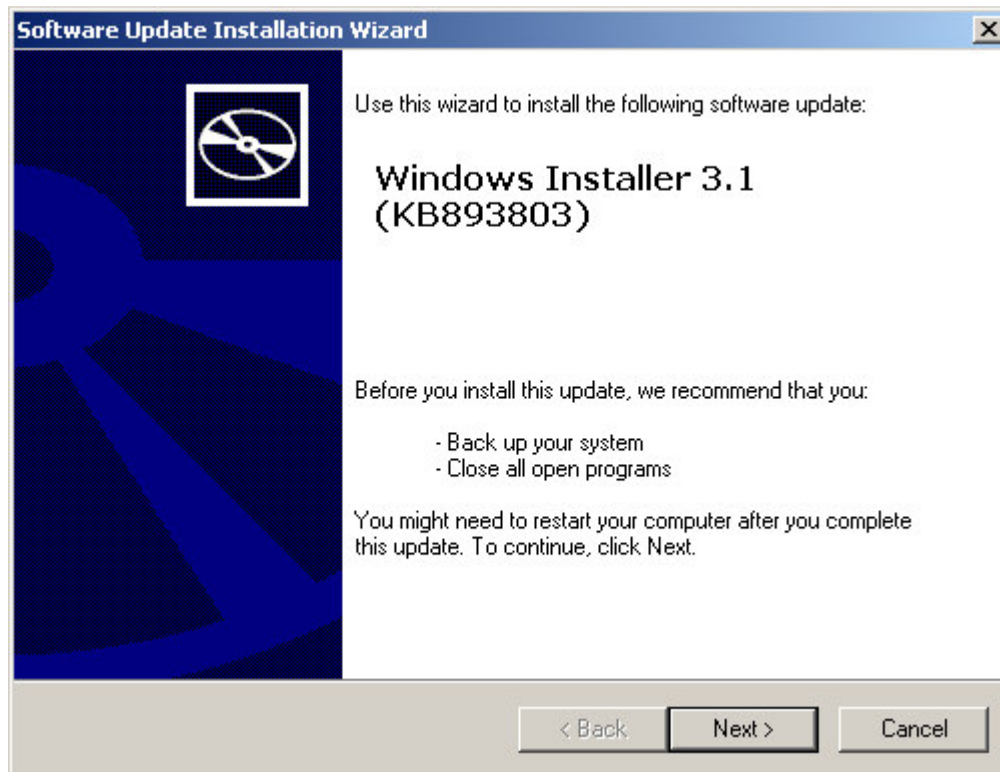


You could be prompted with a windows security warning, select “Run”:



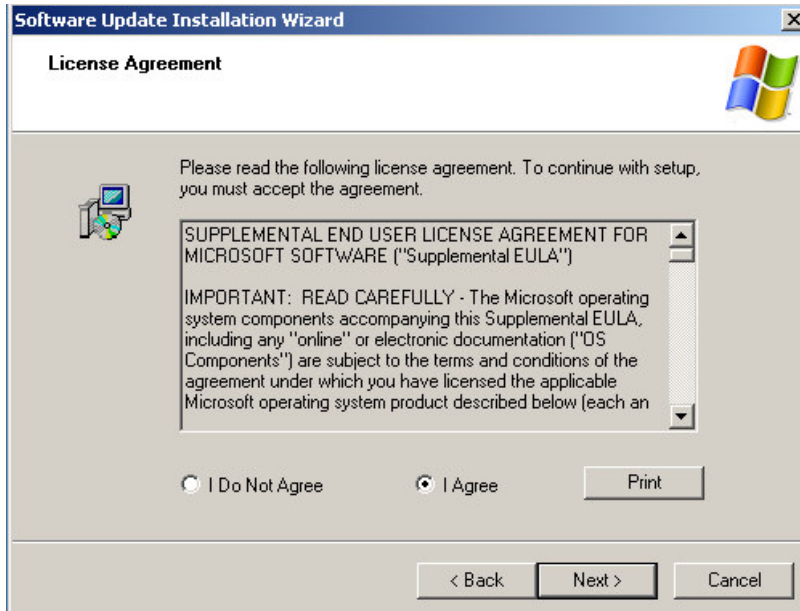
### Windows Installer 3.1

The installation will check and see if the required system software is loaded. The first check is Windows Installer 3.1. If it is not installed you will see the following:



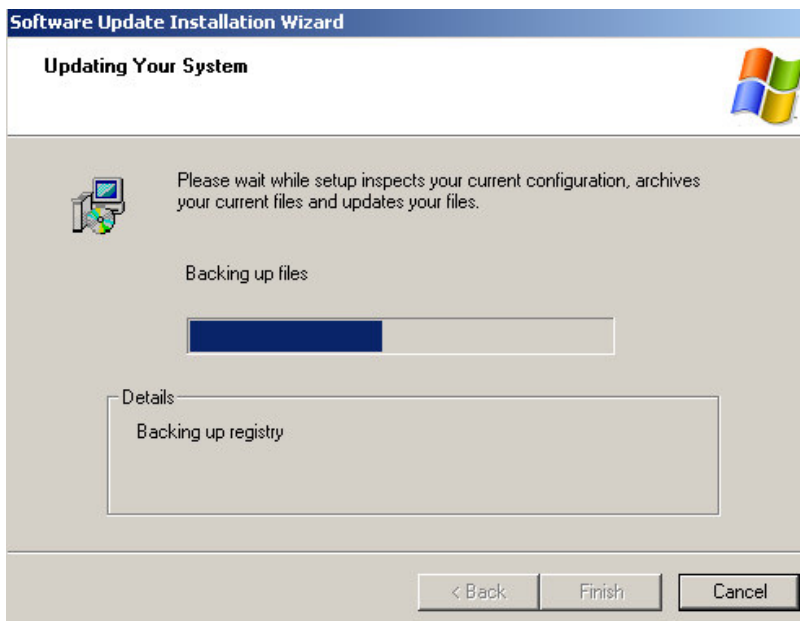
Select Next.

Accept the license agreement and select next:

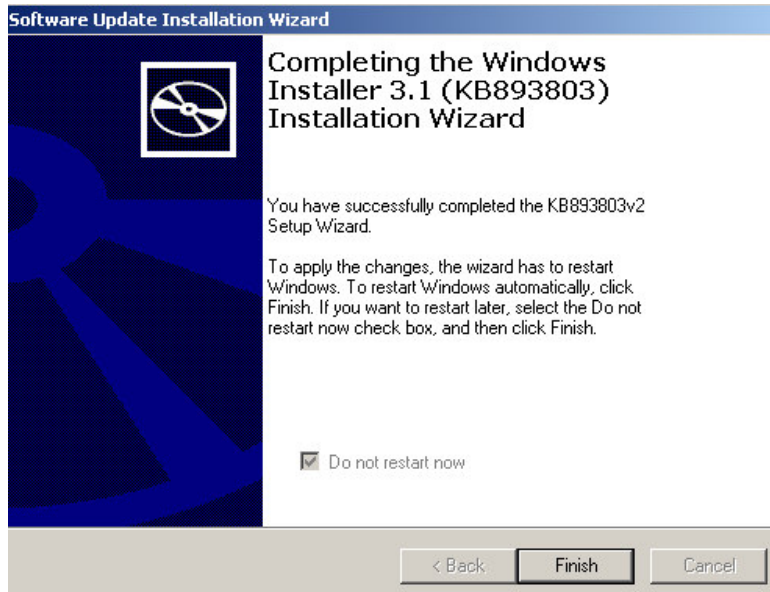


Select Next.

You will see the progress bar installing:



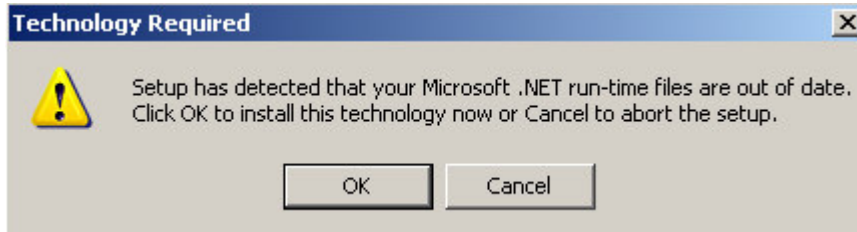
After completion select the finish button.



**Note: The “Do not restart now” check box is filled and grayed out. This means your system will not restart.**

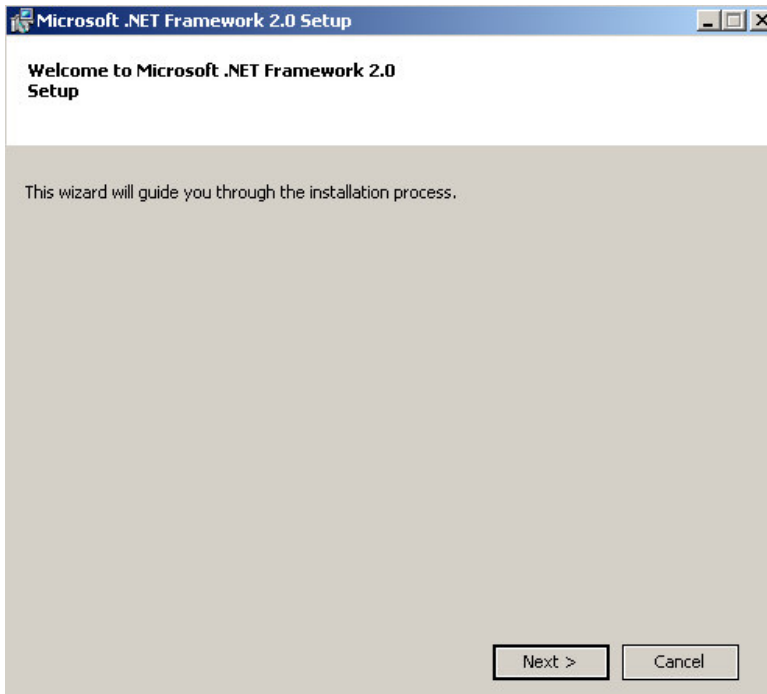
## Microsoft® .Net 2.0 Framework

If Microsoft® Dot Net 2.0 Framework is not present you will be prompted to install:



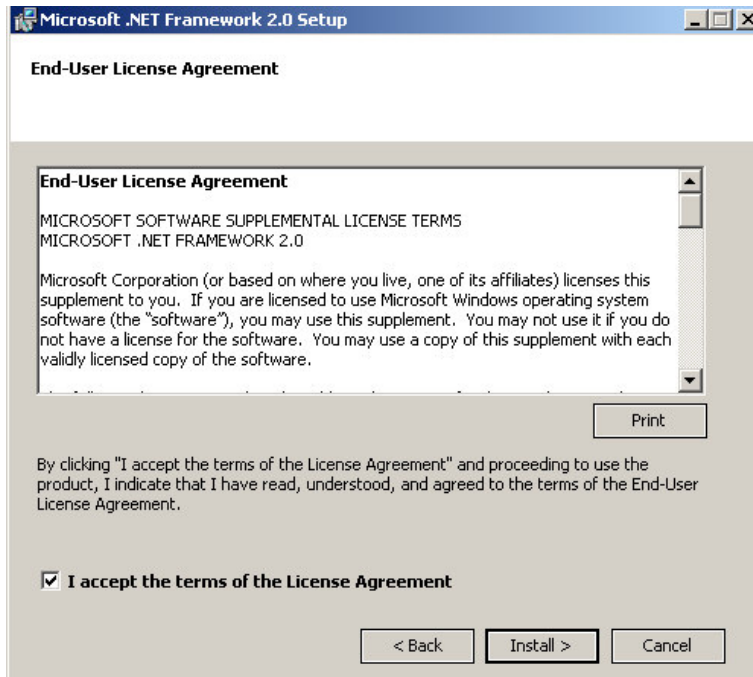
Select the "OK".

After extracting the ".MSI" file you will see the following screen:

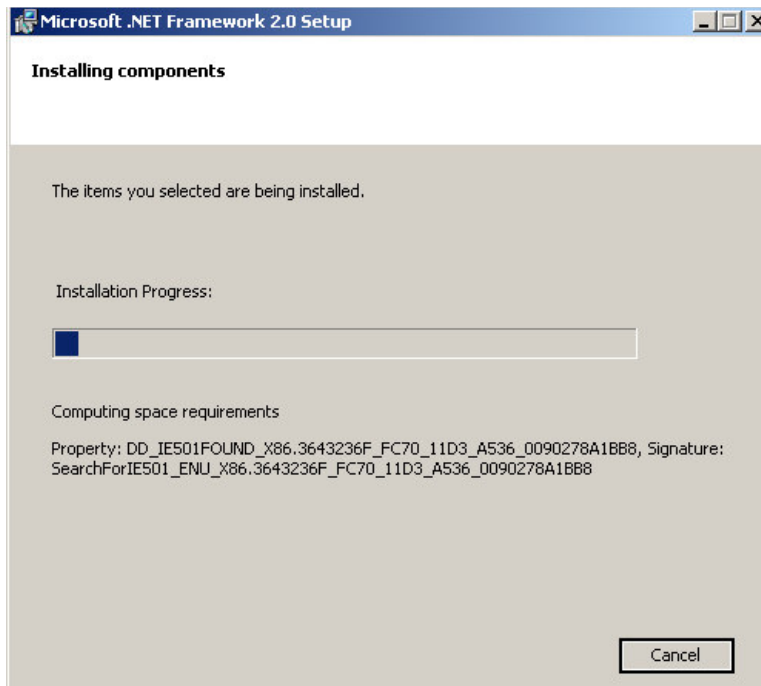


Select the "Next" button.

Accept the license agreement and then select "Install":

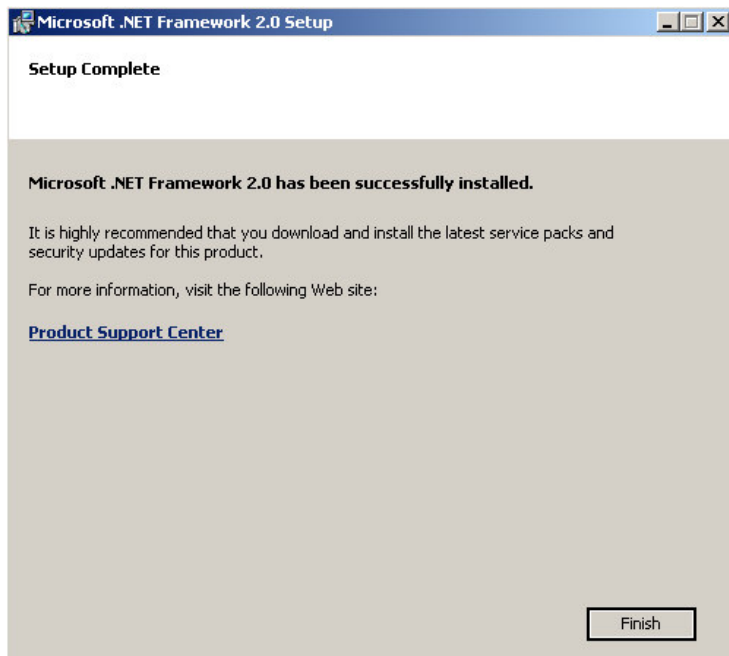


The installer will begin the installation process:





After installation you will be prompted. Select finish:

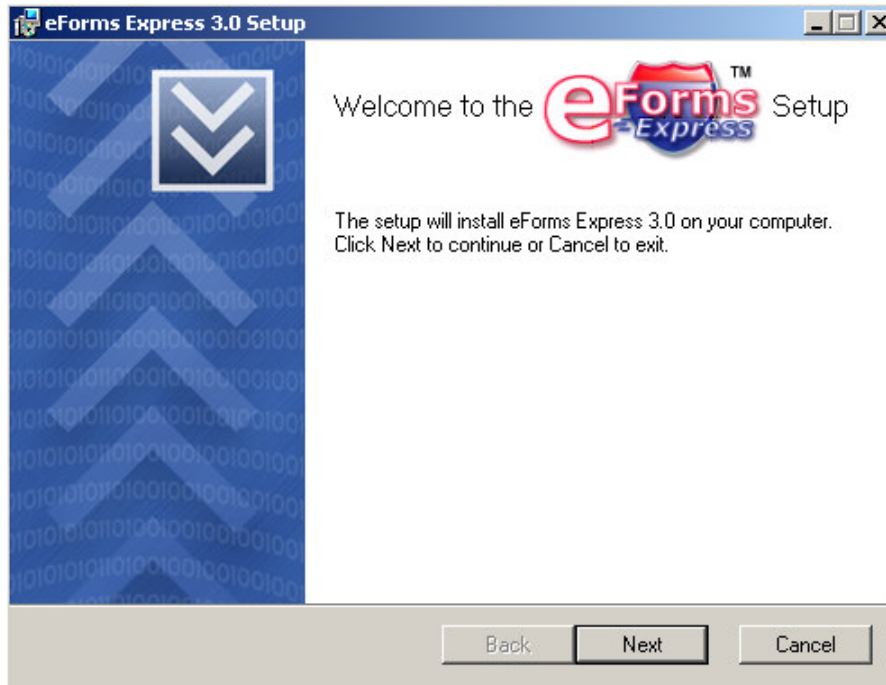




## eForms Express® 3.0 Server Installation

After all prerequisites are installed, you will now be able to install eForms Express® 3.0 server and client. For the demonstration software, you are required to install the server which will also install the client.

The following window will appear:



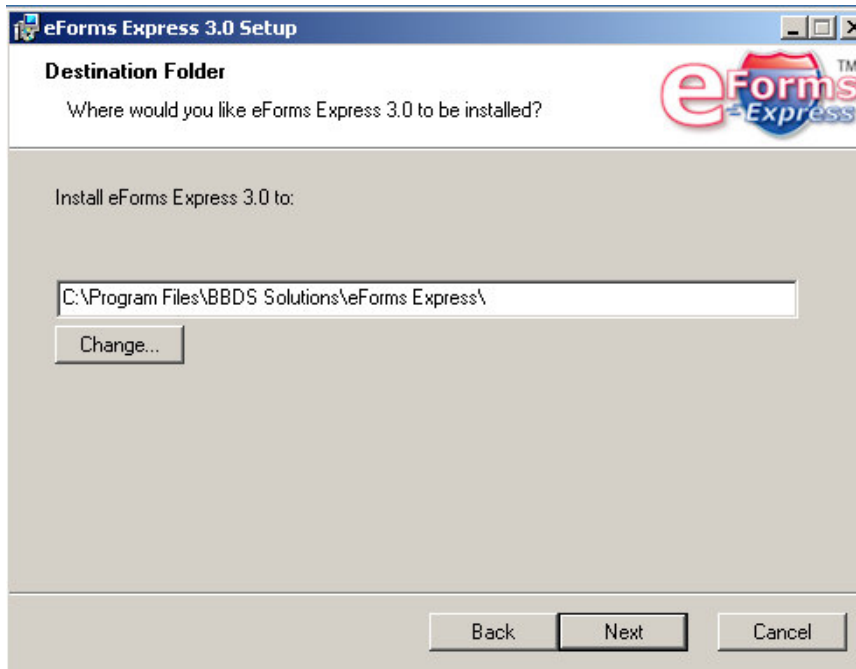
Select Next.



Accept the license agreement and select next:



Use the default destination directory:



Select Next.

---

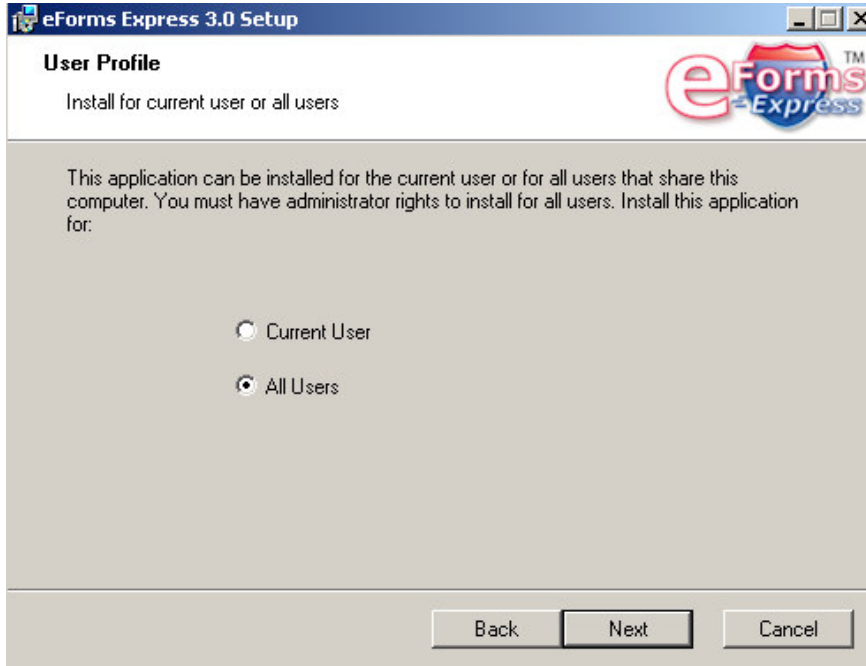
Version 1.0 (1-1-09)

eForms Express is a trademark of Bits and Bytes Document Solutions. All rights reserved worldwide.



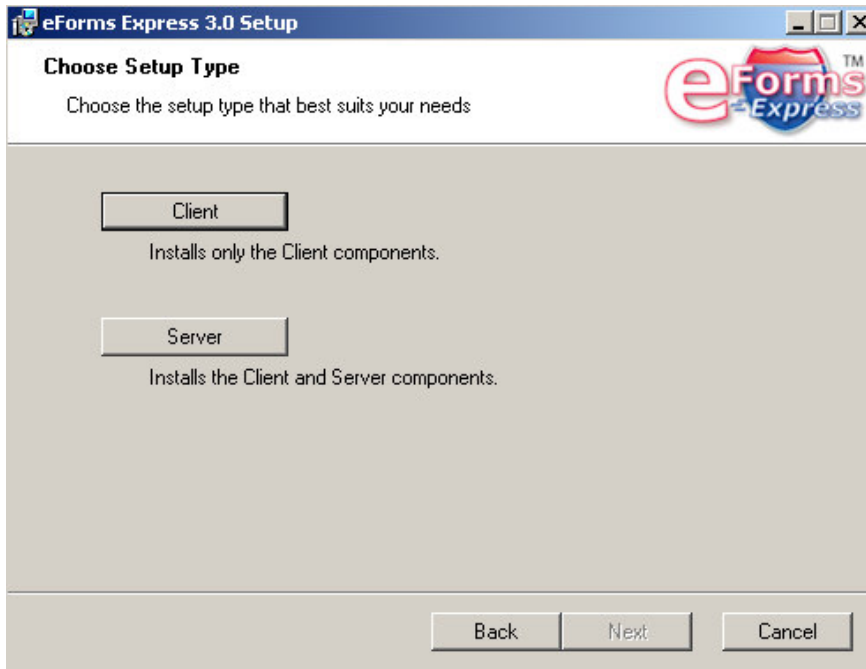


Allow all users to use the program:



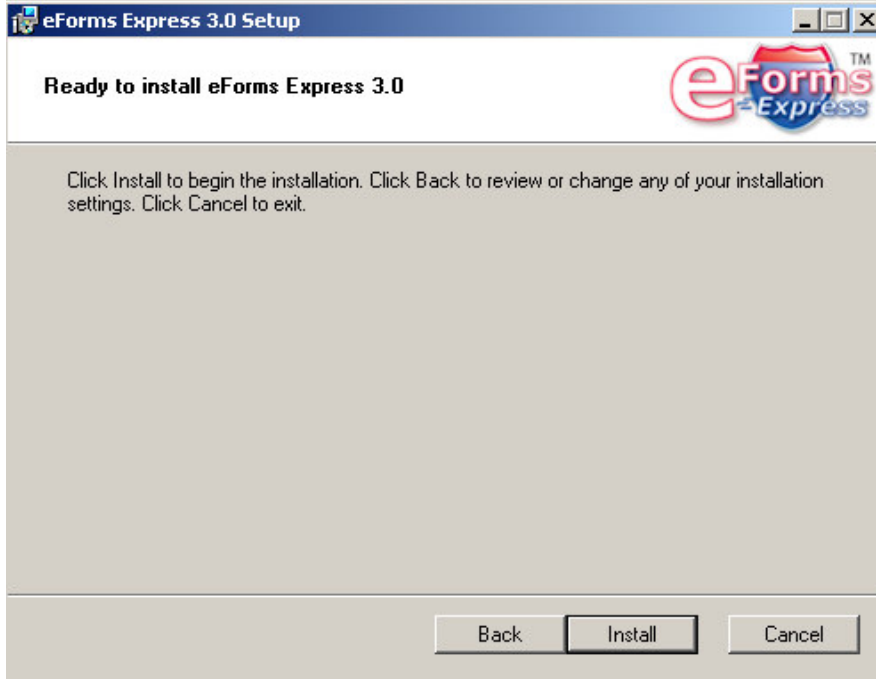
Select Next.

Select the "Server" button:

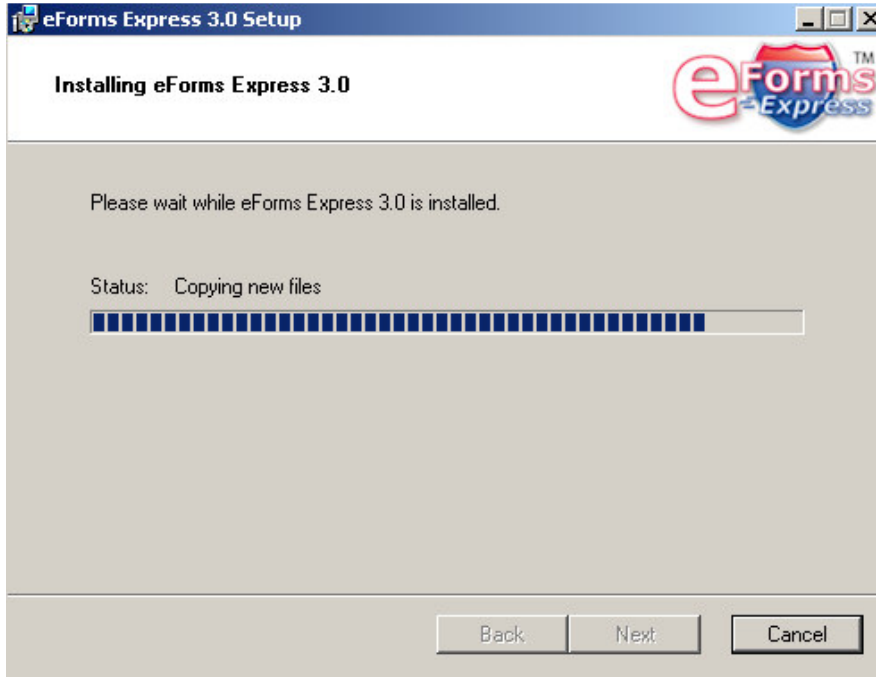




Select the "Install" Button:

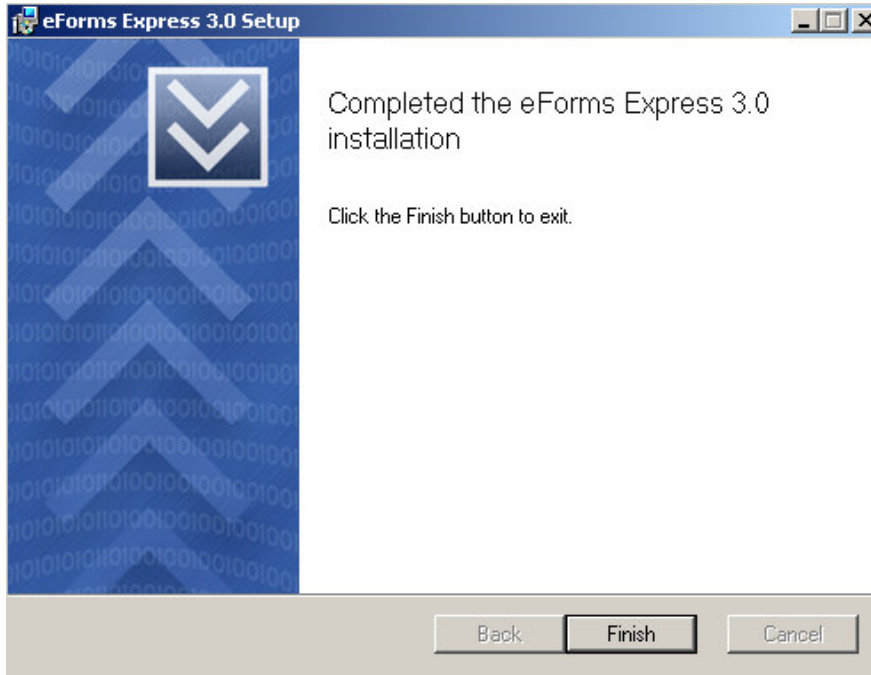


Installation will begin:





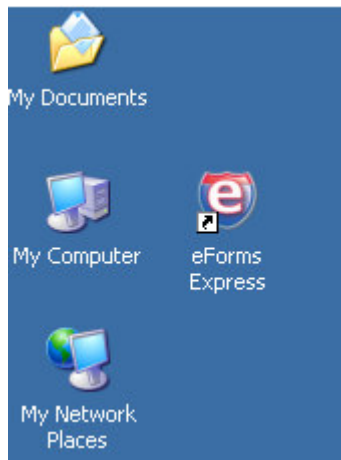
Select the "Finish" button to complete installation:





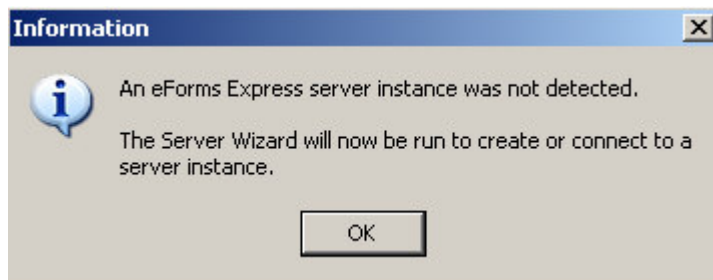
## Creating and Connecting to a Database Instance

During installing eForms Express® 3.0 a shortcut was placed on your desktop:



Click on the “eForms Express” ICON.

You will be prompted with the following message:



Select “OK”.

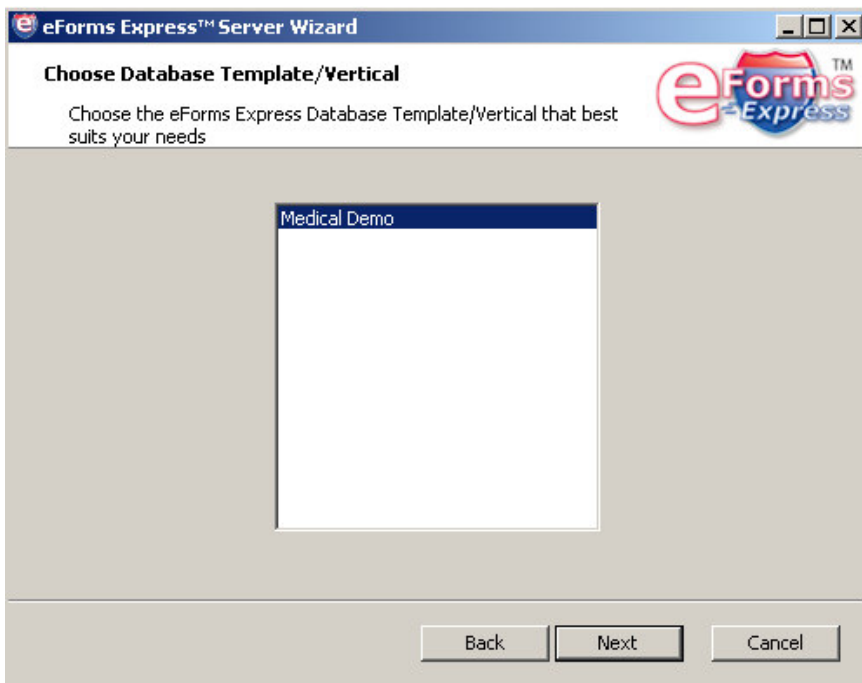


The eForms Express® 3.0 Server wizard will open:



Select Next.

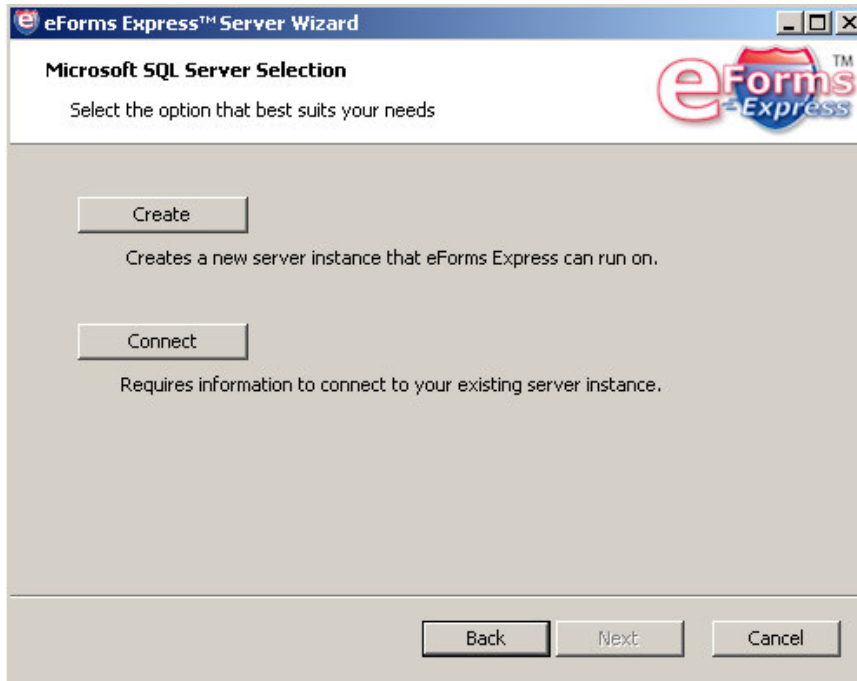
Select the “Medical Demo” Template. This will be used for the demonstration:



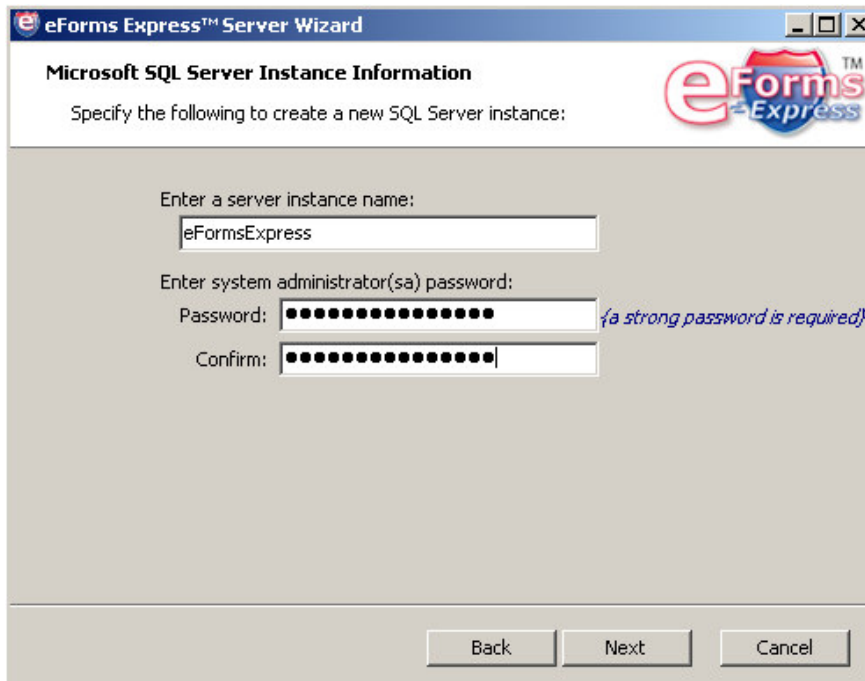
Select Next.



Select the “Create” button. This will create the required database instance.



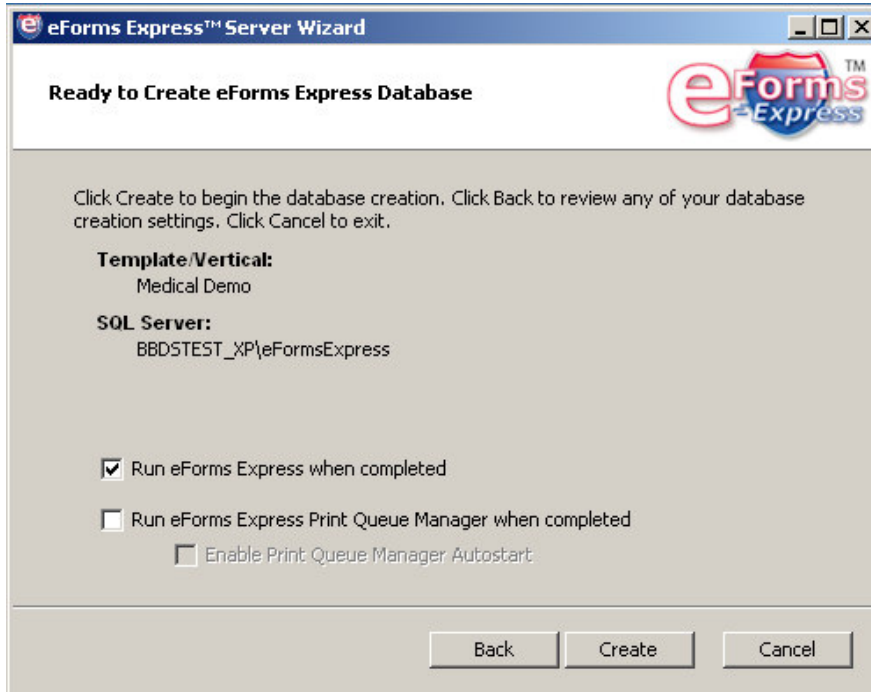
Take the default instance name. You will also need to create a strong password for the “sa” account. It must be 8 characters long with one upper case alpha character and one numeric character:





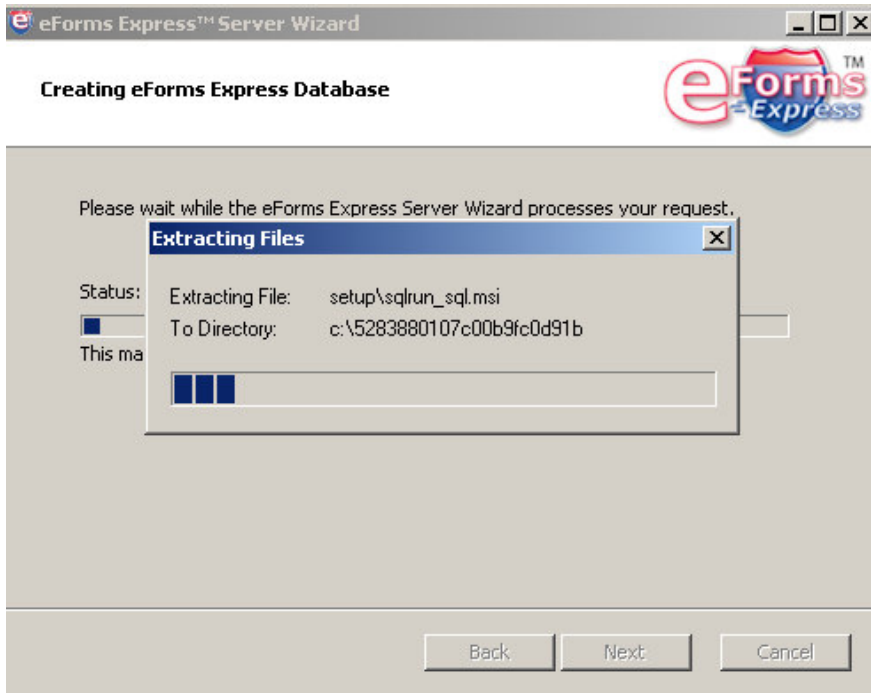
Select Next.

Select "Run eForms Express when completed" :

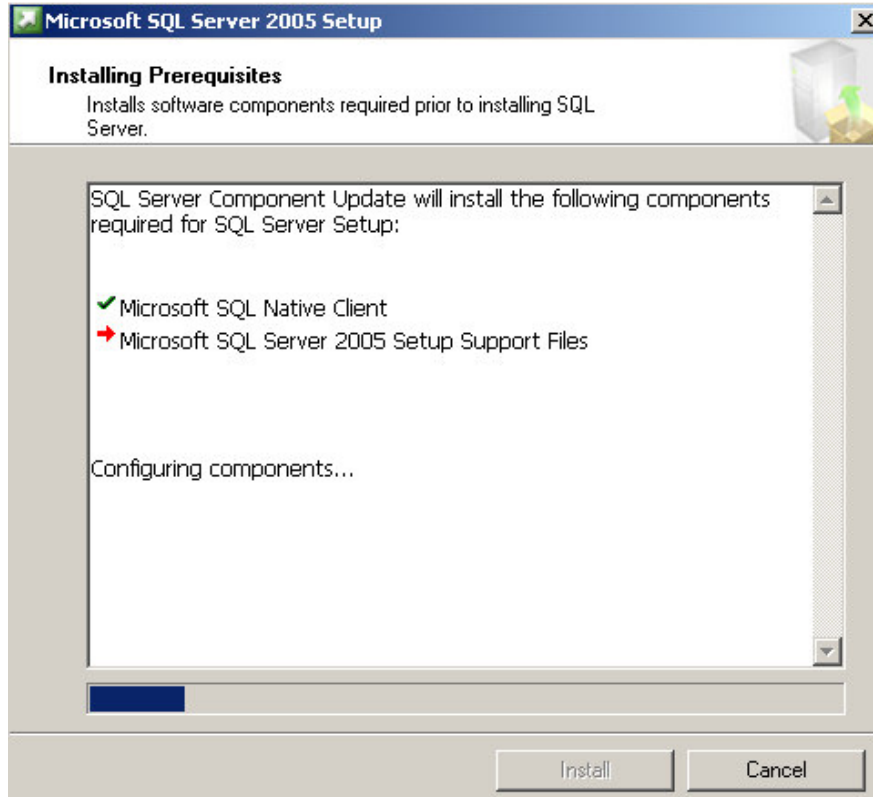


Select "Create".

Microsoft® SQL Server 2005 Express will begin to uncompress:



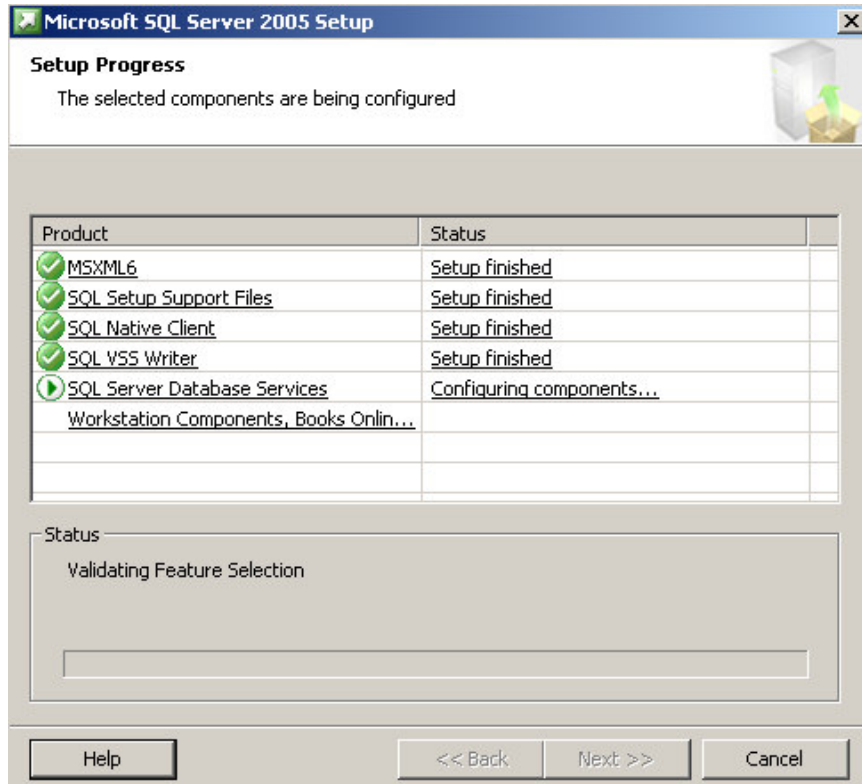
Microsoft® SQL Server 2005 Express is an unassisted install. You will not be prompted to enter any information. Prerequisites will install first:



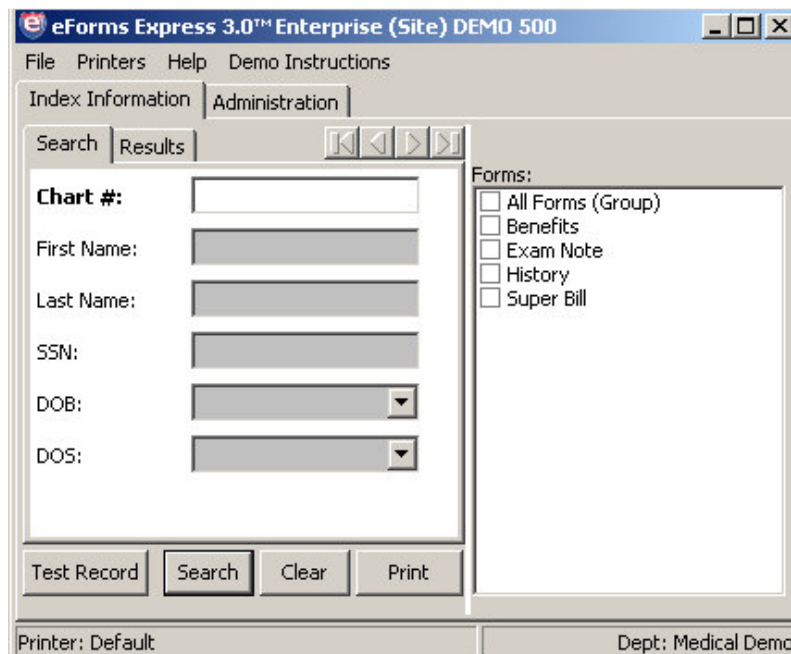




Installation will begin:



Once completed the installer will close and eForms Express® 3.0 client will open.



Click on the Demo Instruction "tool Bar" for further information.